

Slotting cutters GIERTH

Slotting cutters – Screw-on-system

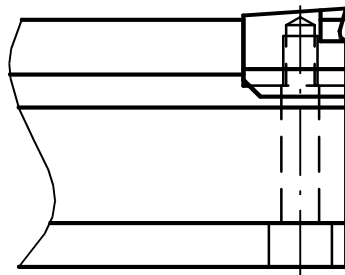
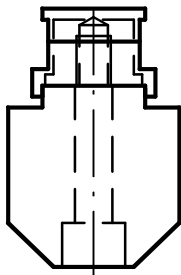
Material SPM 60 (PM-HSS) – Tolerance on demand

TYPE	for cutterbar	Parameters according to DIN 6885		
		Width	Depth	range of bores \varnothing
S206	SH2/6	6	2,8	17-22
S2508	SH2,5/8-10	8	3,3	22-30
S2501	SH2,5/8-10	10	3,3	30-38
S2512	SH2,5/8-10*	12	3,3	38-44
S312	SH3/12-14	12	3,3	38-44
S314	SH3/12-14	14	3,8	44-50
S316	SH3/16-22	16	4,3	50-58
S318	SH3/16-22	18	4,4	58-65
S320	SH3/16-22	20	4,9	65-75
S322	SH3/16-22	22	5,4	75-85
S325	SH3/16-22*	25	5,4	85-95
S422	SH4/22-28	22	5,4	75-85
S425	SH4/22-28	25	5,4	85-95
S428	SH4/22-28	28	6,4	95-110
S432	SH4/32-36	32	7,4	110-130
S436	SH4/32-36	36	8,4	130-150
S440	SH4/32-36*	40	9,4	150-170
S445	SH4/32-36*	45	10,4	170-200
S450	SH4/32-36*	50	11,4	200-230

Cutterholders

Material tempered tool-steel

TYPE	Dimensions				
	Width	Height	Length	Fitting width	from bore- \varnothing
SH2/6	15 (12)	17 (14)	250 (100)	8	17
SH2,5/8-10	15	19	250	12	22
SH2,5/8-10L			330		
SH3/12-14	18	30	250	18	38
SH3/12-14L			330		
SH3/16-22	30	45	330	18	50
SH3/16-22L			500		
SH4/22-28	40	60	500	28	75
SH4/32-36	49	80	500	28	95



*to be used with pre-slottling / Coated cutters approx. 1 week delivery

Rakeangle 15° - other rakeangles as option / Tolerance on demand

Special dimensions and cutters for spline-, tooth- or tangentialprofiles etc. in shorttime on demand